

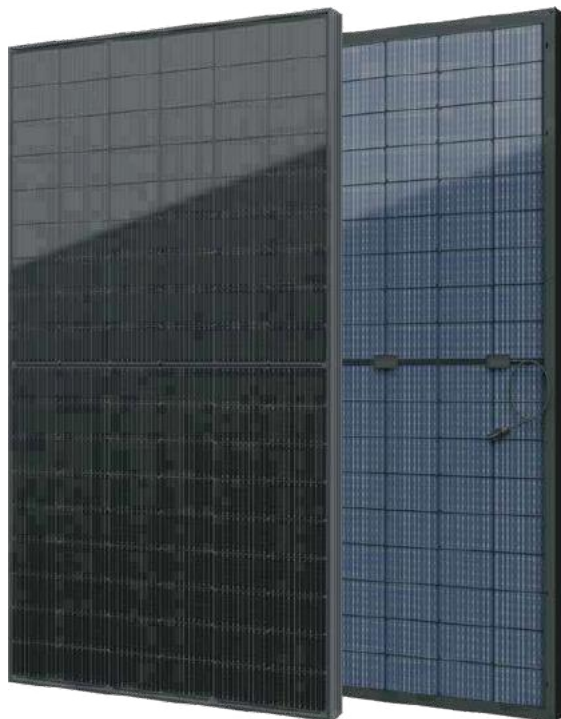


YUKON Series

Half-Cell Transperant Backsheet Module

400-415Wp
Module Power Output

21.25%
Max Efficiency



Key Features



High module conversion efficiency



Better temperature coefficient



Super multi busbar technology



Low attenuation long warranty



Superior load capacity



Higher bifacially

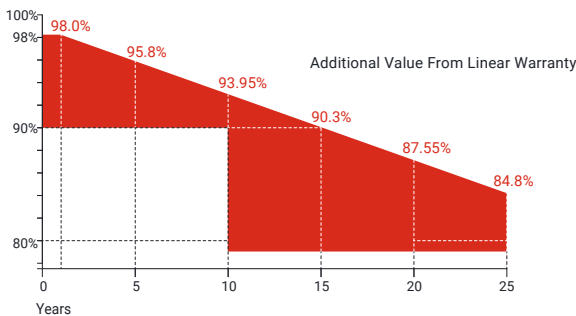


USA based liability insurance



Houston, Texas based company

Warranty



25 Years Guarantee on product material and workmanship

25 Years Linear power output warranty

Product Certification

IEC61215:2016; IEC 61730:2016; UL61730	
IEC62804	PID
IEC61701	Salt Mist
IEC62716	Ammonia Resistance
IEC60068	Dust and Sand
IEC61215	Hailstone
Fire Type (UL61730): Type 1	
ISO14001:2015; ISO9001:2015; ISO45001:2018	

About SEG Solar

Founded in 2016, SEG is a leading vertically integrated PV manufacturer headquartered in Houston, Texas, U.S., and is dedicated to delivering reliable and cost-effective solar modules to the utility, commercial and residential markets. By the end of 2023, SEG has shipped over 5 GW of solar modules worldwide. The company is expected to exceed a production capacity of 5.5 GW by the end of 2024.



Download Datasheet

Electrical Characteristics

Module Type	SEG-400-BMD-TB			SEG-405-BMD-TB			SEG-410-BMD-TB			SEG-415-BMD-TB		
	Front STC	Front NOCT	Back STC	Front STC	Front NOCT	Back STC	Front STC	Front NOCT	Back STC	Front STC	Front NOCT	Back STC
Maximum Power -Pmp(Wp)*	400	301	280	405	304	284	410	308	287	415	311	291
Open Circuit Voltage -Voc(V)	37.12	36.64	37.10	37.22	34.73	37.20	37.32	34.81	37.30	37.42	34.90	37.40
Short Circuit Current -Isc(A)	13.60	10.99	9.59	13.70	11.07	9.66	13.80	11.15	9.73	13.90	11.23	9.80
Maximum Power Voltage -Vmp(V)	30.81	28.82	30.80	30.93	28.91	30.98	31.05	29.05	31.03	31.17	29.19	31.17
Maximum Power Current -Imp(A)	12.99	10.44	9.10	13.10	10.51	9.17	13.21	10.59	9.17	13.32	10.66	9.34
Module Efficiency(%)	20.48			20.74			21.00			21.25		
Power Tolerance(W)							(0, +4.99)					
Maximum System Voltage							1500V DC					
Maximum Series Fuse Rating							30 A					
Bifaciality							70±10%					

STC: Irradiance 1000 W/m² module temperature 25°C AM=1.5

NOCT: Irradiance 800W/m² ambient temperature 20°C module temperature 45°C wind speed: 1m/s

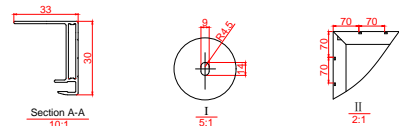
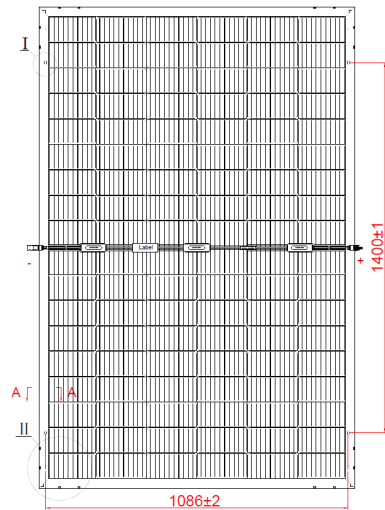
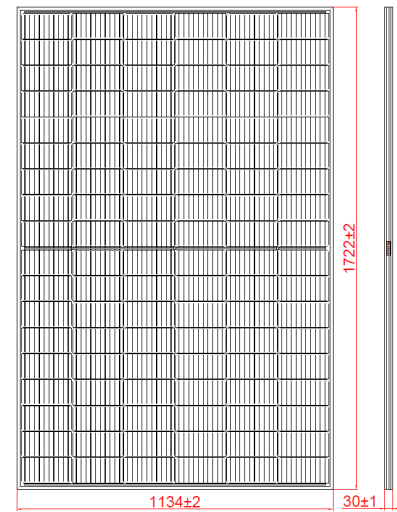
*Measuring tolerance: ±3%

Mechanical Specifications

External Dimension	1722 x 1134 x 30 mm
Weight	21.5 kg
Solar Cells	PERC Mono 182 x 91 mm(108 pcs)
Front Glass	3.2 mm AR coating tempered glass
Frame	Black anodized aluminium alloy
Junction Box	IP68 / 3 diodes
Connector Type	PV-C002-xy or MC4
Cable Type	12 AWG PV Wire(UL)
Cable Length	Portrait: 400 mm(+) / 200 mm(-) Landscape: 1200 mm(+) / 1200 mm(-) or customized length
Mechanical Load(Front)	5400 Pa / 113 psf*
Mechanical Load(Rear)	2400 Pa / 50 psf*

*Refer to SEG installation manual for details

Technical Drawing



*Refer to SEG installation manual for details

Temperature Characteristics **Packing Configuration**

Pmax Temperature Coefficient	-0.35 %/°C
Voc Temperature Coefficient	-0.27 %/°C
Isc Temperature Coefficient	+0.05 %/°C
Operating Temperature	-40~+85 °C
Nominal Operating Cell Temperature (NOCT)	45±2 °C

Container	20'GP	40'HQ
Pieces per Pallet	36	36
Pallets per Container	6	24
Pieces per Container	216	864

I-V Curve

